



WANLESS RECYCLING PARK

Creating a better environment

PROJECT UPDATE - FEBRUARY 2020

Wanless Waste Management has submitted a development application for the Wanless Recycling Park at 304 Coopers Road & 350 Coopers Road in Ebenezer, approximately 12 km southwest of Ipswich CBD. It is proposed that Wanless Recycling Park will accept household; commercial and industrial; and demolition and construction waste. This integrated facility will focus on recovery and reuse and will work with partners who prioritise recycling. The facility will also include a landfill element to manage residual waste.

Development Application Progress

The development application (DA) for Wanless Recycling Park was submitted to Ipswich City Council in December 2019. A request for additional information has subsequently been issued by Council to Wanless in January 2020.

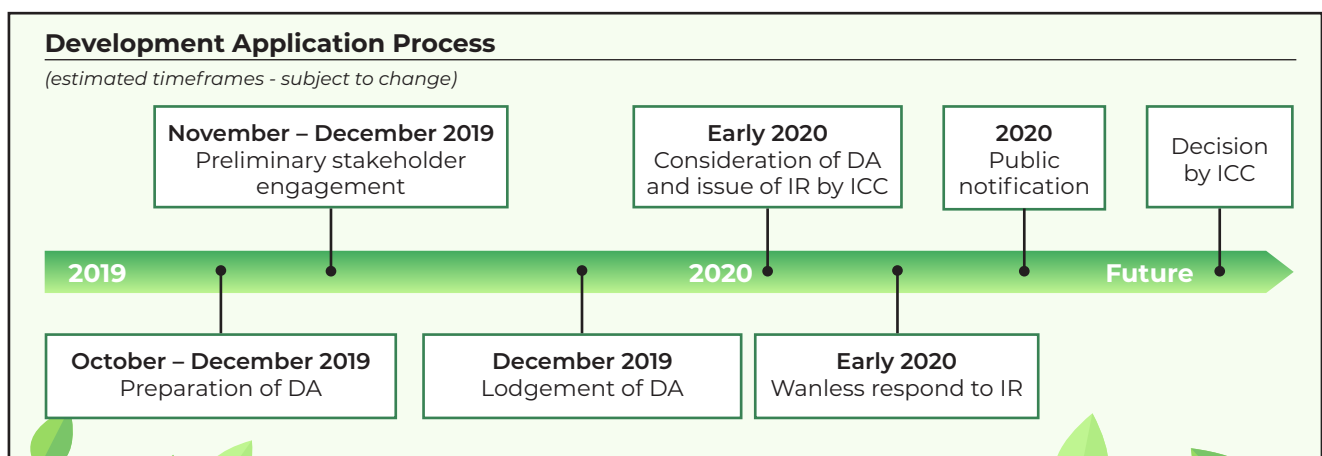
A copy of the development application (*application number 10674/2019*) can be found through City of Ipswich Council PDOnline at pdonline.ipswich.qld.gov.au

- If it is your first visit, accept the terms and conditions and continue to the next page.
- Select '**Application Enquiry**', then enter the application number **10674/2019** into the appropriate boxes on the first line and press 'Search'. No other information is required.

What Happens Next?

Wanless and the project team will work with Council over the next several months to respond to the information request (IR). Once this response is submitted to Council, Wanless will commence public notification to give the community opportunity to make submissions. This will be prior to Council making a decision on the application.

It is expected that the public notification period will not occur before May 2020, although assessment timelines can vary.



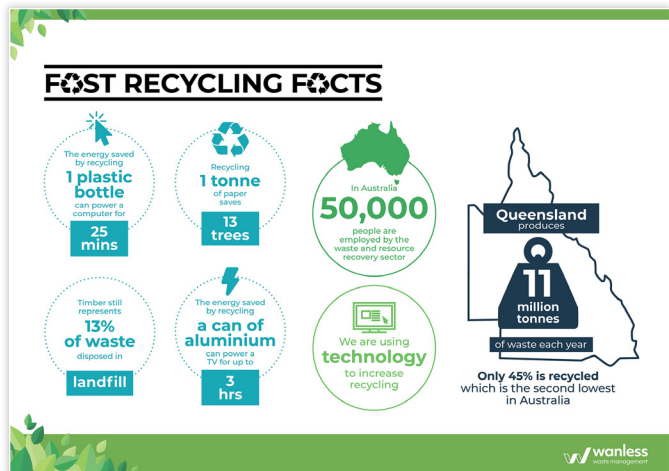
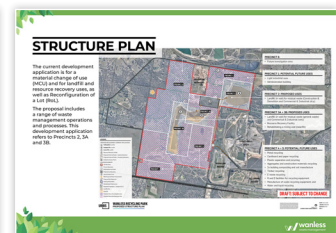
Stakeholder engagement

Prior to lodging the development application in December, representatives from the Wanless Recycling Park project team:

- met with members of the Willowbank Area Group, Rosewood District Protection Organisation and Lock the Gate
- met with state and federal elected representatives
- held two community information sessions to provide preliminary information about the proposed development.
- met with Ipswich City Council in pre-lodgement meetings.

From this engagement we know:

- Communication is essential and Wanless need to continue to engage with the community.
- Recent waste proposals in the region have created concerns for residents and locals.
- Residents want to understand the potential impacts on the environment (water quality, local flora and fauna, air quality, rehabilitation of mining voids, rehabilitation of the site), and the proposed mitigation actions.
- Residents are worried about the impacts on the community (including traffic, odour, noise, house values and reputation of the local neighbourhoods and the City of Ipswich).
- Many stakeholders are supportive of recycling and see it as a solution to a recognised problem.



You can find out more about Wanless Recycling Park at our website

<https://wanless.com.au/about-us/wanless-recycling-park/>

and our demonstrated record of recycling and resource recovery at the Sydney Recycling Park www.wanless.com.au/about-us/sydney-recycling-park.

If you have comments or feedback about the Wanless Recycling Park proposal you can email WRPenquiries@recyclingparks.com.au