

WELCOME

Community Drop-In Session



Look Around | Ask Questions | Provide Feedback

WANLESS

Who is Wanless?

Wanless Waste Management is a family-owned and operated business. The Wanless family started automotive and metal recycling in the Ipswich region in the late 1950s, long before recycling was a priority. Now an industry leader, the company uses its experience in resource recovery to reduce the amount of waste going to landfill. Wanless owns the site where the Wanless Recycling Park is proposed.

The Ipswich community deserves a strong recycling industry with sustainable practices. As a business with our roots in Ipswich, we are committed to working with locals to minimise impacts and share the economic benefits of a future focused industry.

Our Track Record

Wanless already operates an extensive recycling waste management business in South East Queensland and partners with enterprises that share its commitment to sustainability. We have a track record in managing waste and recycling services responsibly, including Sydney Recycling Park, which has maximised diversion from landfill and implemented best practice recycling techniques through technology.



SYDNEY RECYCLING PARK



- Located 56km west of Sydney's CBD within the employment zone for the new Western Sydney Airport.
- We handle waste in an environmentally responsible manner with resource recovery and re-use at the forefront of operations.
- Uses advanced technology sorting processes, e.g. magnetic and eddy current separation, air current separation and baling of recovered commodities.
- Waste avoidance is the ideal solution but there will always be residual wastes that require disposal.
- We manage our facility to the highest work place safety and environmental standards. We strictly adhere to local legislation and EPA guidelines.
- We currently operate two active engineered landfill cells. These have been designed to include a range of environmental protection methods as we operate on an active clay and shale quarry. Less than 20% of the incoming volume finds its way into the void space.
- We invested significantly in groundwater and surface water management through an engineered stormwater detention basin.
- We continue to invest in infrastructure that improves environmental outcomes.

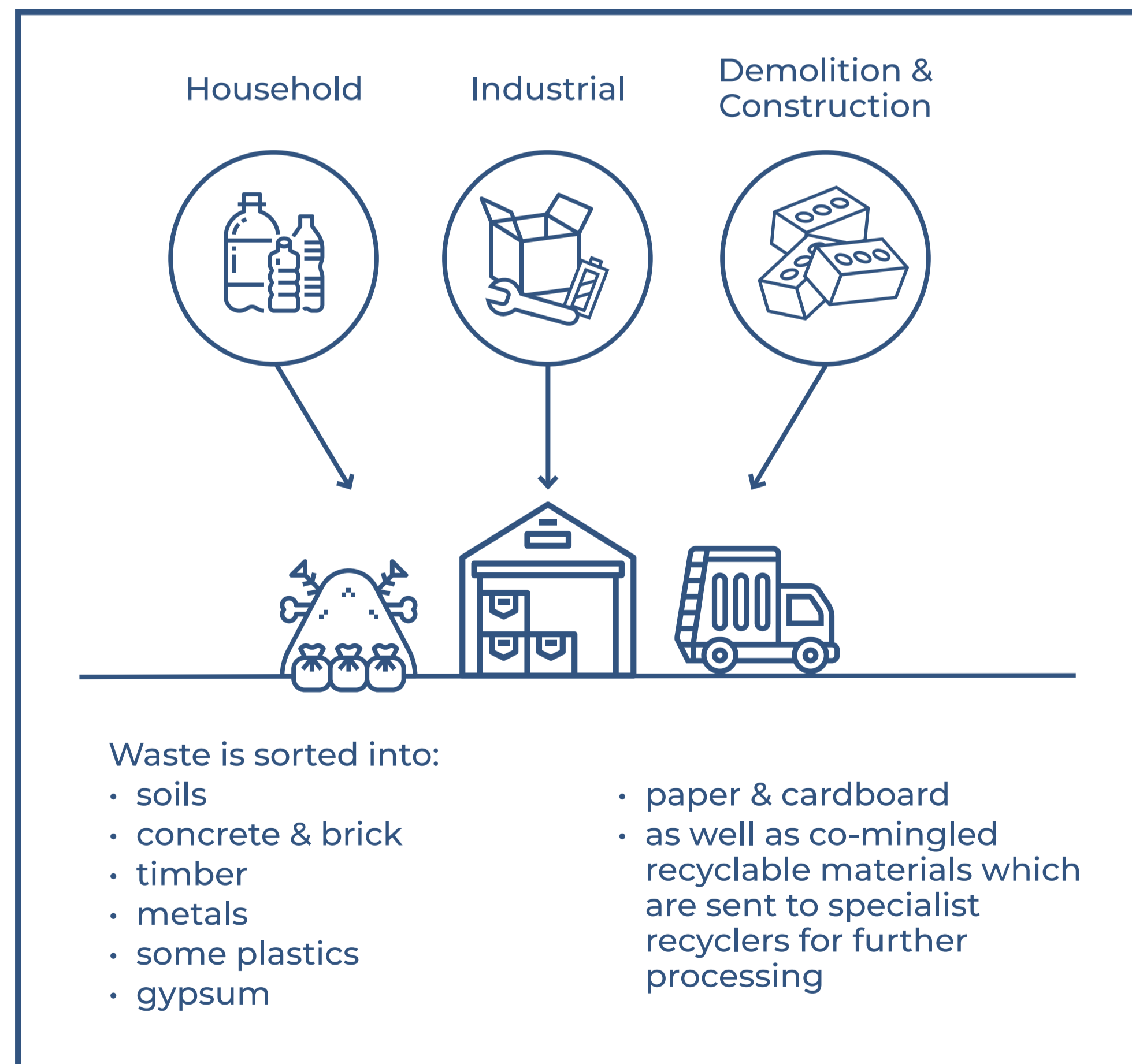


WANLESS RECYCLING PARK

Wanless Recycling Park (WRP) is a proposed resource recovery and recycling development. This will take waste material and redirect it to alternative use, where possible. Any residual waste will be disposed of through landfilling in the existing voids on site.

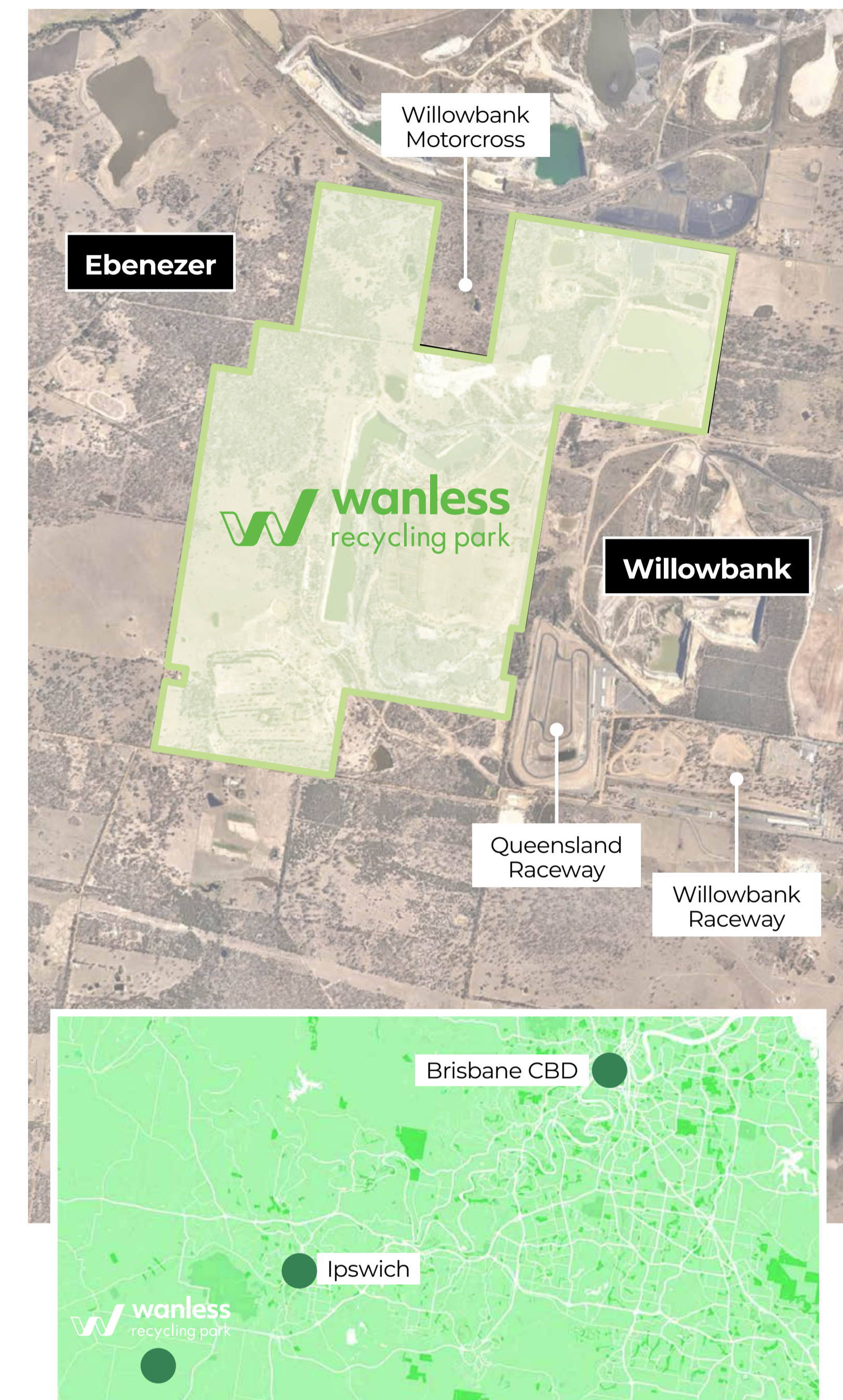
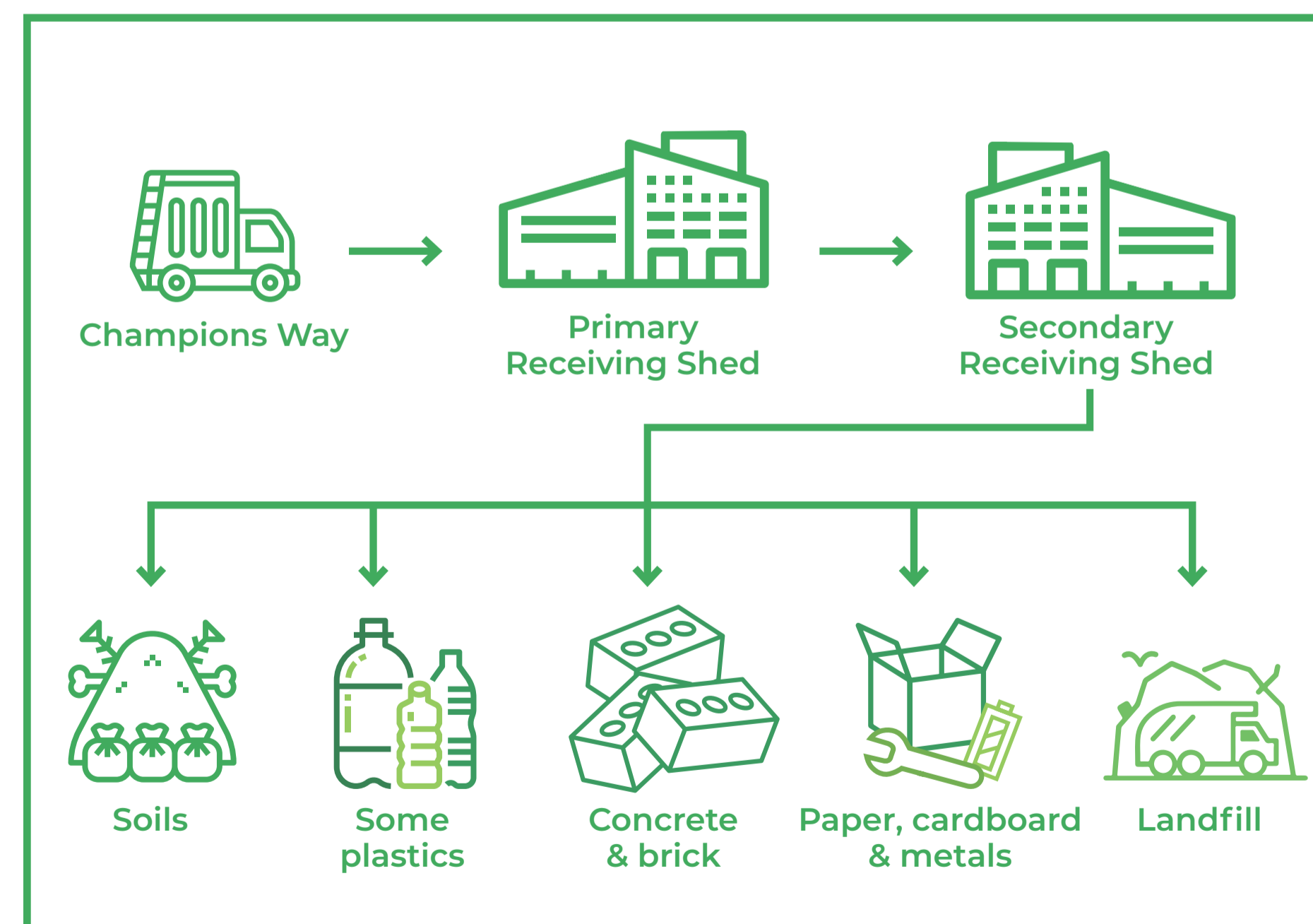
A development application is currently being prepared for Ipswich City Council and will likely be lodged in December 2019.

WRP will manage three types of waste



What will happen on site?

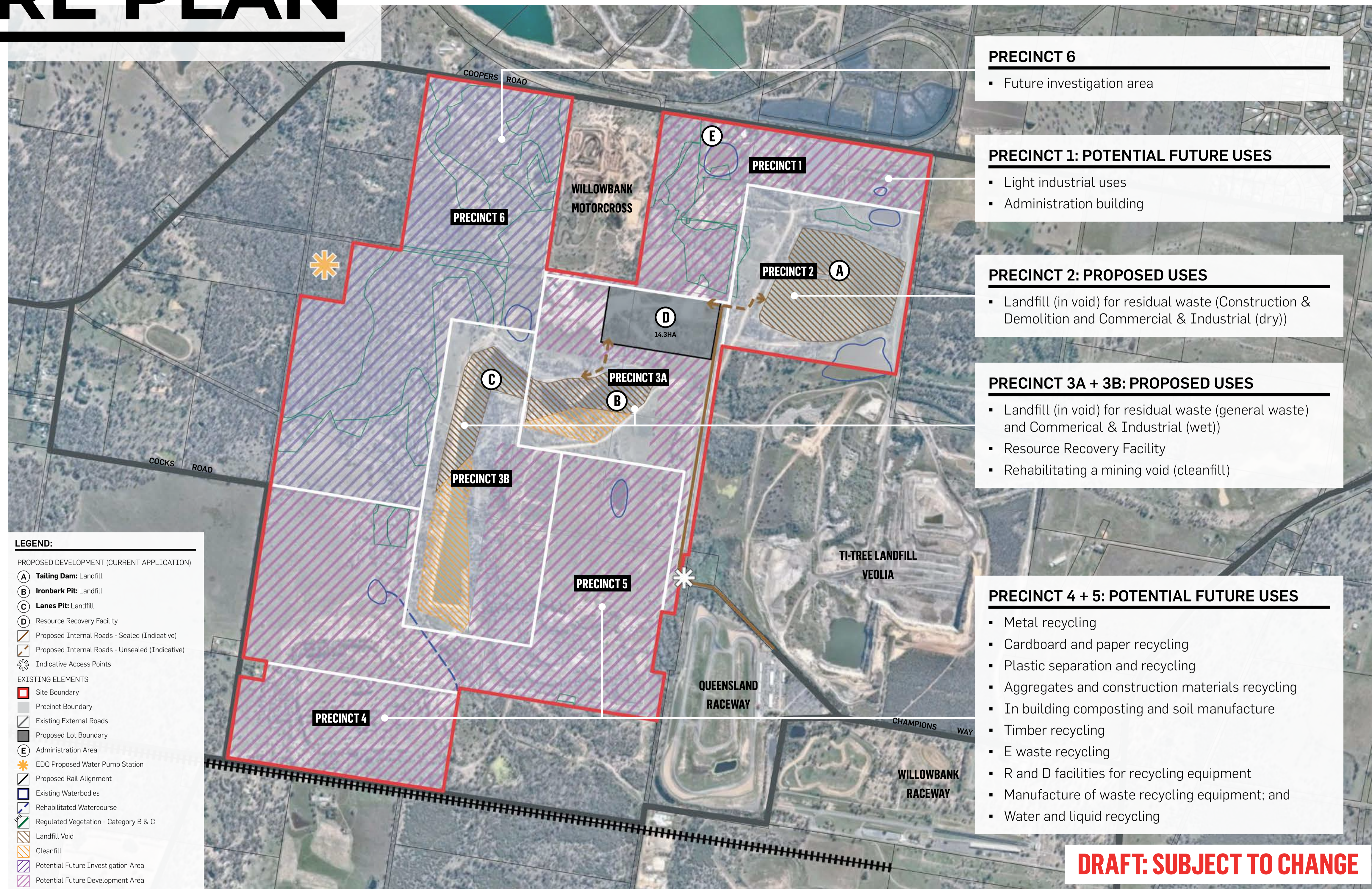
Waste is sorted by physical processes only and will not involve any chemical processing. They will include shredding, screening, magnetic and eddy current separation, optical sorting, hand picking, crushing, air classification and baling.



STRUCTURE PLAN

The current development application is for a material change of use (MCU) and for landfill and resource recovery uses, as well as Reconfiguration of a Lot (RoL).

The proposal includes a range of waste management operations and processes. This development application refers to Precincts 2, 3A and 3B.



DRAFT: SUBJECT TO CHANGE

FAST RECYCLING FACTS



The energy saved by recycling

1 plastic bottle

can power a computer for

25 mins



Recycling

1 tonne

of paper saves

13 trees



In Australia

50,000

people are employed by the waste and resource recovery sector



Timber still represents

13% of waste

disposed in

landfill

The energy saved by recycling

a can of aluminium

can power a TV for up to

3 hrs



We are using **technology**

to increase recycling

Queensland produces

11 million tonnes

of waste each year

Only 45% is recycled which is the second lowest in Australia

ENVIRONMENTAL MATTERS

- Responsibly managing potential impacts on the environment, nearby residents and businesses, is front of mind for Wanless.
- The proposed development has been designed to best use areas that have already been significantly disturbed due to previous mining activities and bentonite processing.
- Technical assessments of the following matters are being undertaken to identify and manage potential impacts:
 - Site surveys for flora and fauna that need to be protected – for example areas of existing koala habitat along the north western part of the site have been identified and avoided as part of the current development application.
 - Potential impacts on waterways, surface waters and groundwater.
 - Potential air and noise emissions to ensure nearby residents and businesses are not adversely impacted.
 - Rehabilitation requirements under the existing mining lease and environmental authority.
- All existing rehabilitation requirements will be complied with and details will be included in the site rehabilitation plan prepared and submitted as part of the development application.
- Identified potential impacts will be addressed to ensure local and state government requirements are complied with.



SITE ACCESS

- We know that traffic is a key concern for locals in particular, impacts on Coopers Road.
- Site access is proposed via Champions Way.
- Formal technical investigations are being prepared for the development application, including:
 - Traffic movements and site access studies;
 - Potential noise, dust and odour assessments to consider associated impacts of vehicle movements to and around the site.
- Site access is designed so that trucks associated with the proposed development will have minimal impact on nearby residential areas.
- The proposed internal access road from the site entrance to the Resource Recovery Facility will be sealed.
- It is proposed that modified operations could occur on Queensland Raceway event days. This arrangement can be agreed with Queensland Raceway and Ipswich City Council. It will form part of an agreed traffic management plan.

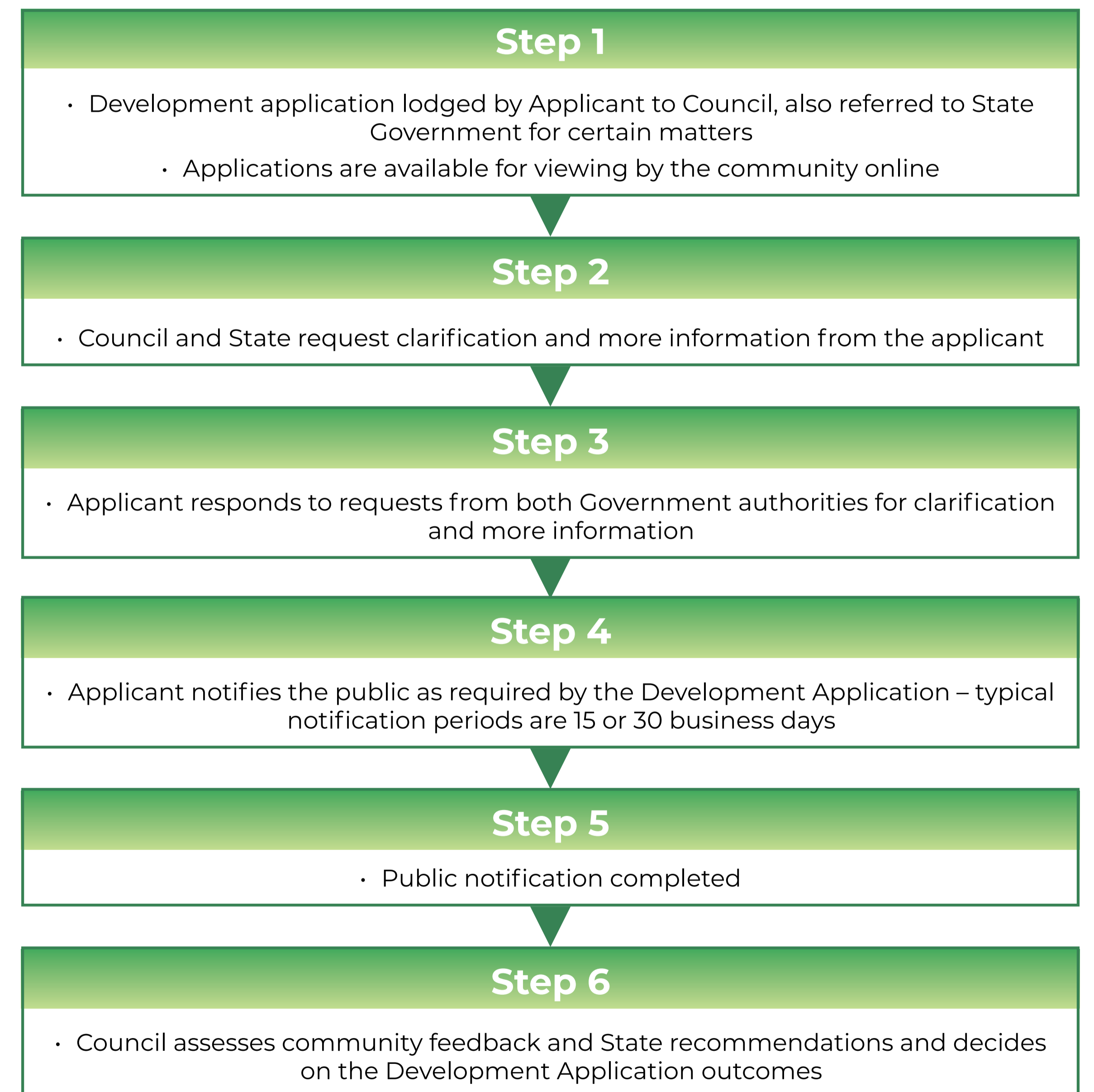


NEXT STEPS

The development application for the proposed development has not yet been lodged with Council. Once lodged there will be further opportunity for stakeholders to view details of the development application and provide comment.

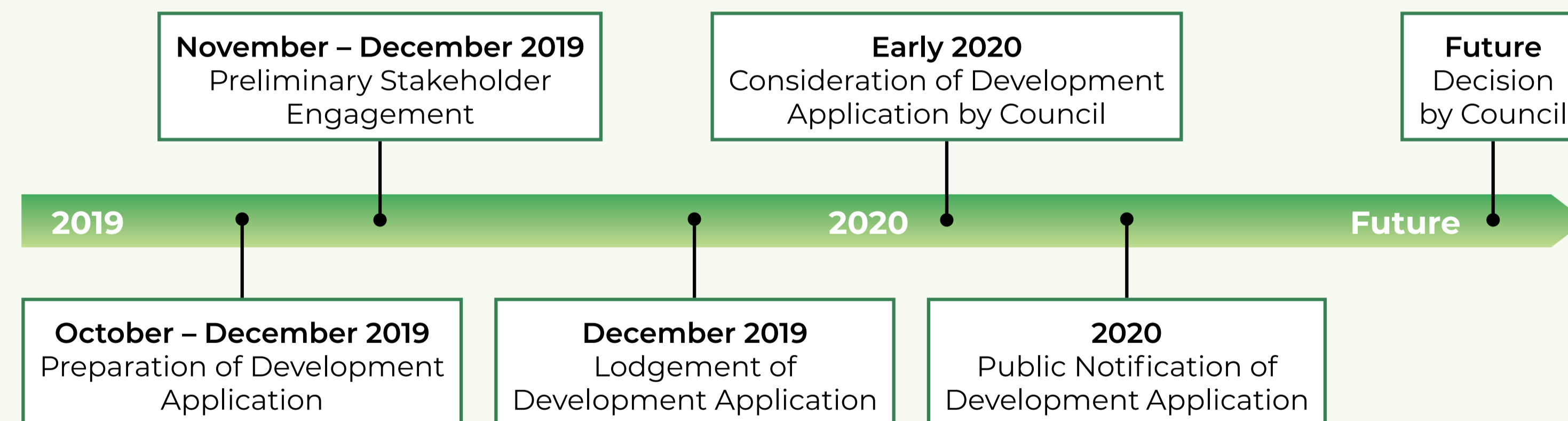
Our discussions today, along with engagement with other key stakeholders over the coming weeks, will help Wanless consider community interests in the project proposal. We will continue to provide information to stakeholders as the project progresses, this is just our first step in the process.

The Process as Guided by the Planning Act 2016



Project Timeline

(estimated timeframes - subject to change)



WHAT WE HAVE HEARD

Wanless and the consultant team have held preliminary discussions with a range of stakeholders recently.

We know that there are concerns about:

- Suitable engagement with the communities who are directly affected by the proposed project;
- Impacts on the community (including traffic, odour, noise, house values and reputation of the local neighbourhoods and the City of Ipswich); and
- Impacts on the environment (water quality, local flora and fauna, air quality, rehabilitation of mining voids, rehabilitation of the site).

Stakeholders have highlighted significant opportunity for Wanless to engage with the community to access local knowledge to understand and manage environmental and community impacts.

Feedback

If you have comments, feedback or questions about the Wanless Recycling Park proposal you can email WRPenquiries@recyclingparks.com.au

More Information

You can find out more about Wanless Waste Management at the website www.wanless.com.au and our demonstrated record of recycling and resource recovery at the Sydney Recycling Park wanless.com.au/about-us/sydney-recycling-park

